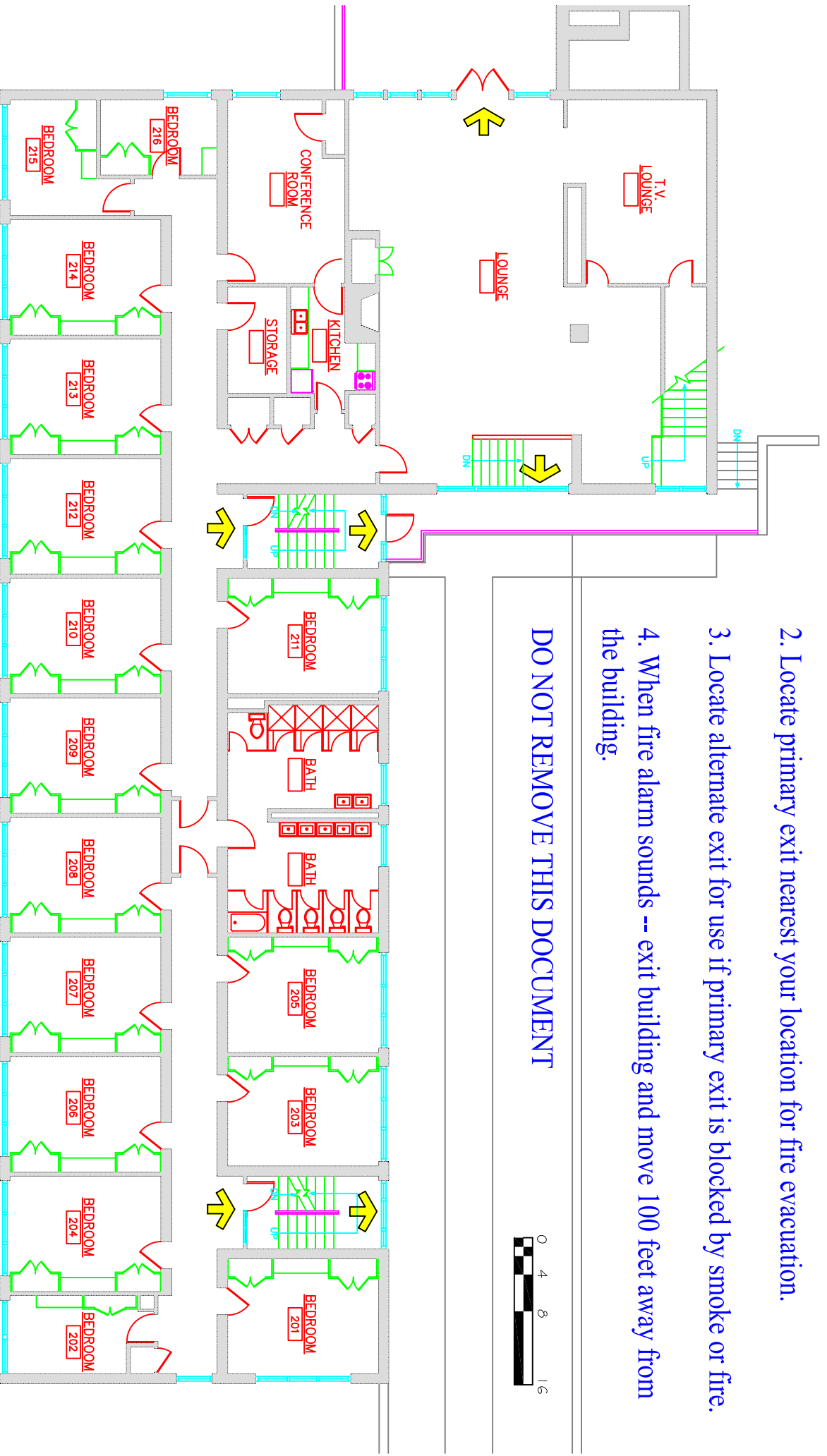
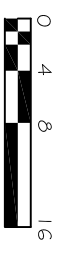


1. Exits marked in yellow.
2. Locate primary exit nearest your location for fire evacuation.
3. Locate alternate exit for use if primary exit is blocked by smoke or fire.
4. When fire alarm sounds -- exit building and move 100 feet away from the building.

DO NOT REMOVE THIS DOCUMENT



Randolph Hall

Second Floor